

# A FEW TIPS FOR YOUR VISIT TO OBERAMMERGAU

## PASSION PLAY THEATRE



(4) Passionstheater  
Theaterstrasse 16  
Tel: 0 88 22-9 45 88 33  
passionstheater@oberammergau.de

Guided tours through the riveting story of Christ's Passion, including the stage, dressing rooms and auditorium  
(Duration: about 45 minutes)

### Guided tours start at the top of the hour:

6th January to the end of Feb.: Sat and Sun at 11 am and 2 pm  
March to April: daily from 10 am to 4 pm, except at 1 pm  
May to October: daily from 10 am to 5 pm  
1st – 3rd Advent weekends: Sat and Sun at 11 am and 2 pm  
4th Advent weekend to 6th January: daily from 10 am to 4 pm, except at 1 pm

closed on Christmas Eve and New Year's day  
on New Year's Eve only in the morning

English tour: April to October every day at 11 am and 2 pm  
Closed in November  
Group reservations throughout the year on inquiry

## OBERAMMERGAU MUSEUM



(8) Oberammergau Museum  
Dorfstr. 8 · Tel.: 0 88 22-9 41 36  
museum@oberammergau.de

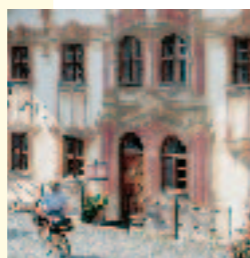
Bavarian art and culture from gothic to modern times – the 500-year history of wood carving and sculpture

Famous Oberammergau cribs, historical films that bring the old village to life, the artistic and social history of carving in the 18th and 19th centuries, art and crafts of the 20th century, a museum information centre with the biographies of over 1000 carvers and sculptors, special exhibitions, the museum's collection of verre églomisé works (pictures behind glass) entitled "Worlds Behind Glass" in the Pilatus House

Opening hours:  
1st Advent weekend until 2nd February and April to October:  
Tues to Sun from 10 am to 5 pm, open on holidays (including Mondays)  
Guided tour on Thursdays at 7 pm  
Closed in February, March, Nov., on Christmas Eve and New Year's day

"Worlds Behind Glass", Pilatus House: on the opening days of the museum from 3 pm to 5 pm

## PILATUS HOUSE



(21) Pilatushaus · Ludwig-Thoma-Str. 10  
Tel.: (Tourist Information) 0 88 22-92 31-0  
Tel.: (Crafts Shop) 0 88 22-94 95 11  
Tel.: (Oberammergau Museum) 0 88 22-9 41 36  
info@oberammergau.de

It owes its name to the murals (frescos) on the garden side of the house showing Pilate condemning Jesus to death.

The "Living Workstudio" with Crafts Shop: you can watch carvers, glass painting artists, potters and many other craftsmen at work, admission free

"Worlds Behind Glass": Oberammergau Museum's collection of verre églomisé works, one of the largest collections in Europe

### Opening hours of the "Living Workstudio" with Crafts Shop:

Mid-May to October: Tues to Sat from 1 pm to 6 pm  
Open on Advent weekends and in the Christmas holidays; please inquire about the precise opening hours  
Closed in November, February, March and April

Opening hours of "Worlds Behind Glass", Pilatus House: on the opening days of the museum from 3 pm to 5 pm

## KOLBEN CHAIR LIFT



(20) Kolbensesselbahn  
Kolbengasse 13  
Tel.: 0 88 22-47 60  
kolbensesselbahn@oberammergau.de

Hiking in the Ammergau Alps: you can reach the top terminal situated at an altitude of 1270 m in 18 minutes, the starting point for mountain hikes of various distances and degrees of difficulty; new: Oberammergau Bikepark

Ideal family skiing area in winter, Funpark for skiers and snowboarders

Food and drink available at the Kolbensattelhütte, Kolbenalm and Wankalm

### Operating hours:

June to October: daily from 9 am to 4.45 pm  
December to mid-January: daily from 9 am to 4.15 pm  
Mid-January to March: daily from 9 am to 4.30 pm

Due to maintenance work the lift may be closed for a time in April, May and November.

## LABER CABLE CAR



(19) Laber-Bergbahn  
Ludwig-Lang-Str. 59  
Tel.: 0 88 22-47 70  
laber-bergbahn@t-online.de

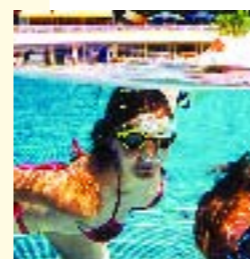
Wonderful panoramic views of the Wilder Kaiser, the Karwendel, the Wetterstein and the Allgäu mountain ranges as well as the lakes Staffelsee and Ammersee. The Laber Cable Car travels to popular take-off areas

for hanggliders and paragliders and to ski slopes for snow freeriders in winter

### Operating hours:

April through June: daily 9 am to 5 pm  
July and August: daily 9 am to 5.30 pm  
September through November: daily 9 am to 5 pm  
December through March: daily 9 am to 4.30 pm  
Due to maintenance work the Laber Cable Car may be closed for a time in March, April, November and December.

## WELLENBERG



(18) Erlebnisbad WellenBerg  
Himmelreich 52 · Tel.: 0 88 22-92 36-0  
wellenberg@oberammergau.de

The leisure and fun pool centre for the whole family against the stunning Alpine panorama, with an adventure hot water pool and giant water slides; sauna area with the first „Tipi Sauna“ in Germany, steam bath and solarium; in summer with large natural water pool, a 50-metre heated sports pool; largest sand arena in Bavaria and much more

### Opening hours:

May to September: daily from 9.30 am to 9 pm  
October to April: daily from 10 am to 9 pm  
Due to maintenance work the centre may be closed for a time in April and November.



For further information please see our special brochures!  
Oberammergau Tourismus · Eugen-Papst-Str. 9a · D-82487 Oberammergau  
Tel. +49(0)88 22 - 92 31-0 · Fax +49(0) 88 22 - 92 31-90  
info@oberammergau.de · www.oberammergau.de

Oberammergau

Map of Oberammergau

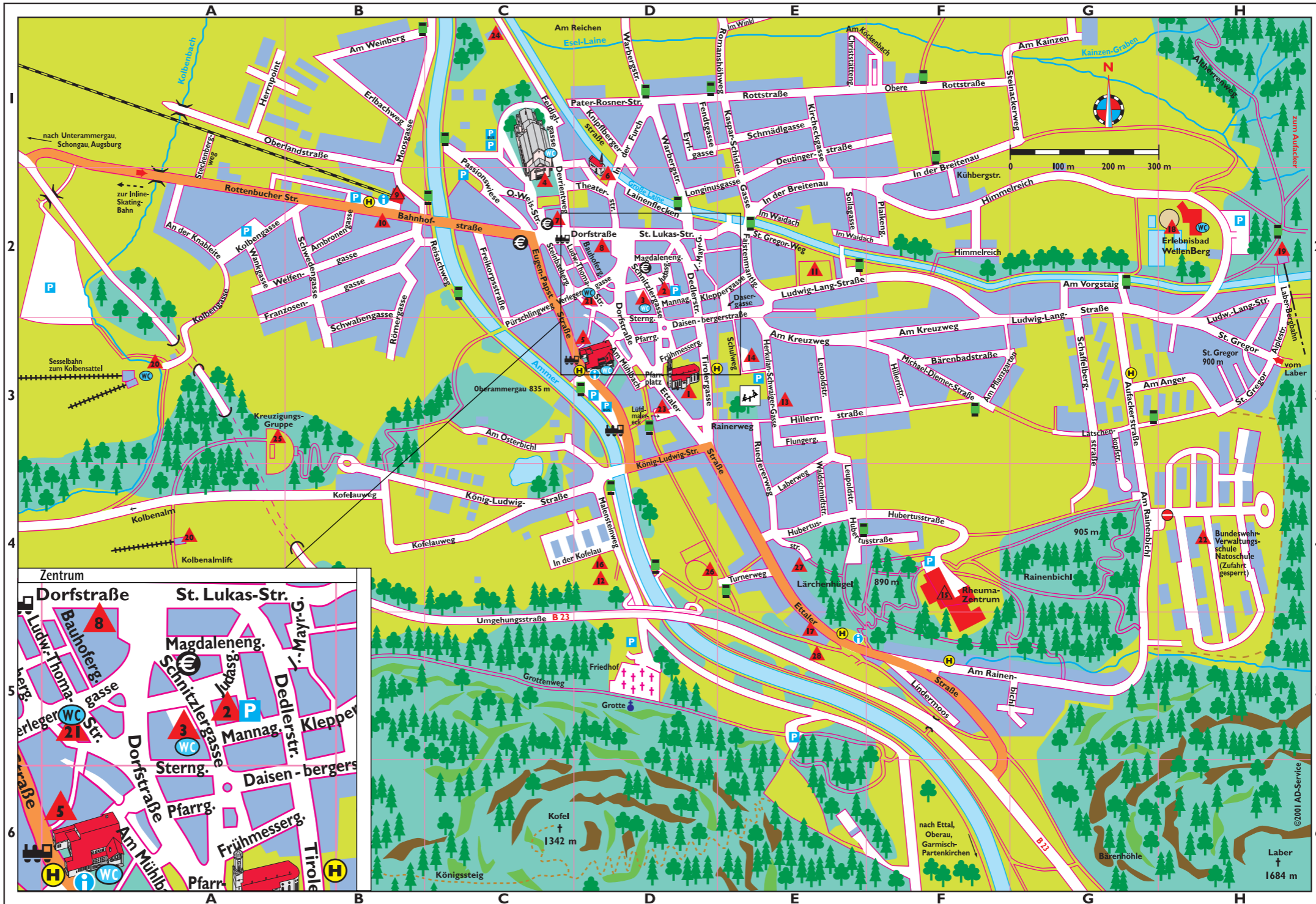
2/2007 · subject to alterations · not responsible for misprints or typographical errors · circulation: 25,000

Bayern

www.oberammergau.de

# STREET NAMES

Aiplestraße H 2/3	König-Ludwig-Straße B-D 4
Am Anger GH 3	Kühbergstraße F 2
Ambronengasse B 2	Laberweg E 3/4
Am Kainzen FG 1	Lainenflecken D 2
Am Köckenbach EF 1	Latschenkopfstraße G 4/5
Am Kreuzweg EF 3	Leupoldstraße E 3/4
Am Mühlbach D 3	Lindermoos F 5
Am Osterbichl C 3	Longinugasse DE 2
Am Pflanzgarten F 3	Ludwig-Lang-Straße E-H 2
Am Rainenbichl FG 4/5	Ludwig-Thoma-Straße CD 2
Am Vorgstaig G 2	Lüftmalereck D 3
Am Weinberg B 1	Magdalengasse D 2
An der Knableite A 2	Malensteinweg D 4
Aufackerstraße G 3/4	Mannagasse D 2
Bahnhofstraße C 2	Michael-Diemer-Straße F 3
Bärenbadstraße F 3	Moosgasse B 1
Bauhofergasse D 2	Obere Rottstraße F 1
Christstättengasse E 1	Oberlandstraße AB 1/2
Dasergasse E 2	Othmar-Weis-Straße C 2
Daisenbergerstraße DE 2/3	Passionswiese C 1/2
Dedlerstraße D 2	Pater-Rosner-Straße D 1
Deutingenstraße EF 1/2	Pfarrgasse D 3
Devrientweg C 2	Pfarrplatz D 3
Dorfstraße CD 2/3	Plaikengasse F 2
Erlbachweg B 1	Pürschlingweg C 2/3
Ettaler Straße D-F 3-5	Reisachweg C 2
Eugen-Papst-Straße CD 2/3	Romanshöhweg E 1
Eyrgasse D 1	Rottstraße D-F 1
Faistenmantlgasse E 2	Rottenbucher Straße AB 2
Feldiglgasse C 1	Römergasse B 2/3
Fendtgasse D 1	Ruedererweg E 3/4
Flungergasse E 3	Schaffelbergstraße G 3/4
Franzosengasse AB 2	Schmädlgasse E 1
Freikorpsstraße C 2	Schnitzlergasse D 2/3
Frühmessergasse D 3	Schulweg E 3
Herkulan-Schwaiger-Gasse E 3	Schwabengasse B 2/3
Herrnpoint AB 1	Schwedengasse B 2
Hillernstraße EF 3	Soilgasse E 2
Himmelreich F-H 2	Steckenbergweg A 1/2
Hubertusstraße EF 4	Steinackerweg FG 1
Im Waidach EF 2	Steinbachergasse C 2
Im Winkl E 1	Sternegasse D 2/3
In der Breitenau EF 1/2	St. Gregor H 3
In der Furch D 1/2	St. Gregor-Weg E 2
In der Kofelau CD 4	St. Lukas-Straße D 2
Josef-Mayr-Gasse D 2	Theaterstraße D 2
Judagasse D 2	Tirolergasse D 3
K.-Schisler-Gasse E 1/2	Turnerweg E 4
Kircheckgasse E 1/2	Verlegergasse CD 2
Kleppergasse DE 2	Waldschmidtstraße E 4
Knipflbergerstraße D 1	Wankgasse A 2
Kofelauweg A-C 4	Warbergstraße D 1/2
Kolbengasse A 2	Welfengasse AB 2



- 1 Catholic Church
- 2 Town Hall
- 3 "Small Theatre"
- 4 Passion Play Theatre
- 5 Tourist Information  
„Ammergau House“  
for visitors
- 6 Protestant Church
- 7 Fire Station
- 8 Oberammergau Museum
- 9 Train Station
- 10 Post Office
- 11 Woodcarving School
- 12 Tennis, squash und  
fitness centre,  
curling, natural ice rink  
and rifle range
- 13 Catholic Church Hall
- 14 School
- 15 Rheumatism Centre
- 16 Youth Hostel
- 17 Mini-Golf-Course
- 18 Leisure center Wellenberg
- 19 Laber Cable Car
- 20 Kolben chairlift and ski lifts  
with Bikepark and Funpark  
for snowboarders and skiers
- 21 Pilatus House
- 22 German Army School  
und NATO School
- 23 Reptile Zoo
- 24 Police Station
- 25 Crucifixion Group
- 26 Sports center
- 27 Oberammergau Health  
Centre "Am Kofel"
- 28 Camping site

- Stop for Ammertal-Express
- Bank/cash dispenser
- Parking
- Bus Parking
- Bus Stop
- Information Board
- Public WC
- Public WC for Handicaps
- Points of interest and public facilities
- Chair Lift, Cable Car
- Playground
- Robi Dog-Dogtoilette